



FURIX

Furix Aerosol Chamber



Aerosol Chamber is used to help deliver medication to cats/dogs suffering from respiratory conditions such as chronic bronchitis, laryngeal paralysis or tracheal collapse.

The chamber is intended to be used along with a metered dose inhaler to deliver aerosol medication to your animal lungs as prescribed by your veterinarian.

Before Use

- Carefully examine the chamber and replace immediately if any defect noticed.
- The chamber is shipped with 3 different sized masks.
- Select the mask that fits best and insert on front piece of chamber.
- The mask should cover the nose and mouth of animal but not eyes.

Item No.	SAC-5
Mask Size	0/1/2



3 Mask Sizes

Each device is shipped with 3 different sized masks.

The mask should cover the nose and mouth of animal but not eyes.

Exhalation valve

when the animal exhales, the gas will out through the exhalation valve.

Connector

Connect the device and the mask

Inhalation Valve

Extra sensitive, low resistance valve is designed to respond to shallow, low volume breaths.

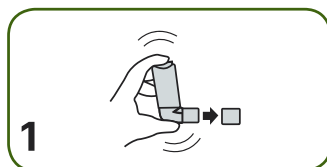
Flow indicator

As the animal inhales, the inhalation valve will move toward the animal, the inhalation valve will back to the original position when the animal stops inhalation or exhales. So it can calculate how many times the animal breaths.

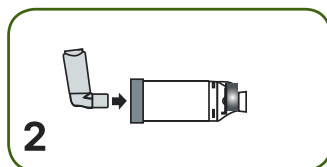
Backpiece

Insert inhaler into the back of the chamber.

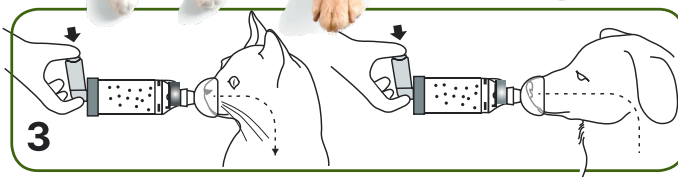
Direction for Use



1 Remove cap and shake inhaler.



2 Insert inhaler into back of chamber and gently apply the mask to your cat's/dog's face.



3 Press the inhaler to release the medication when the Flow Indicator is moving toward your cats/dogs and hold the mask in place for 5-6 breaths.

Cleaning Instruction



1. Remove the back piece, mask and the adapter. Do not remove valves during cleaning.



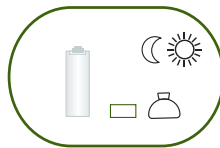
2. Soak both parts in lukewarm water with liquid detergent for 15 minutes. Agitate gently.



3. Rinse in clean water.



4. Shake out excess water. Do not rub dry.



5. Let air dry in vertical position.



6. Replace back piece when unit is completely dry and ready for use.

It comes with an easy-to-use Flow Indicator that allows you to see exactly how much medication your animal is getting, which means they will receive the exact amount of medication every time it's used.

Furix Trade Venture Limited

Address: 6/F MEGA CUBE, WANG KWONG ROAD, KOWLOON, HONG KONG,
Mob: +852 9579 0472 E-mail: vet.furix@gmail.com, sales@myfurix.com
Tel: +852 9579 0472

FURIX